

Urban Health Initiative

Engaging the health sector to realize climate and health benefits



**CLIMATE &
CLEAN AIR
COALITION**
TO REDUCE SHORT-LIVED
CLIMATE POLLUTANTS

UN HABITAT

FOR A BETTER URBAN FUTURE

• I . C . L . E . I

Local Governments for Sustainability



NORWEGIAN MINISTRY
OF FOREIGN AFFAIRS



**World Health
Organization**

Importance / Challenges / Benefits

..of integrated approaches at the pollution-environment-health nexus..

Importance: Cities are complex, challenging and multi-sectoral. So are the challenges that cities are facing. Therefore it requires a trans-sectoral or nexus approach to actually depict and tackle them.

Challenges: Us! (the complicated UN administration and long lead-times required to get started).

Benefits: Better understanding of underlying problem setting, therefore also a better chance to achieving AQ / env. Improvements. Specific interventions in the urban planning context.

Health evidence

Health competency

Health communications

Urban Health Initiative: 3 pillars to catalyse policy change

Health evidence

Health competency

Health communications

Moving ahead with urban transformation

6 Urban leaders act - changes in policies, air quality, climate & health indicators are tracked

5 Communications intensify demands for change

4 Alternative scenarios tested – vision for healthy urban future articulated

3 Tools for assessing health and economic benefits

2 Health policymakers build competencies

1 Current policies assessed and mapped

Proof of concept through UHI pilot projects

- **First two pilot projects are being implemented in Accra and Kathmandu**
- **Goal: ideally two pilot cities per region to prove the concept and generate replicable tools and guidance material**





1 Current policies assessed and mapped

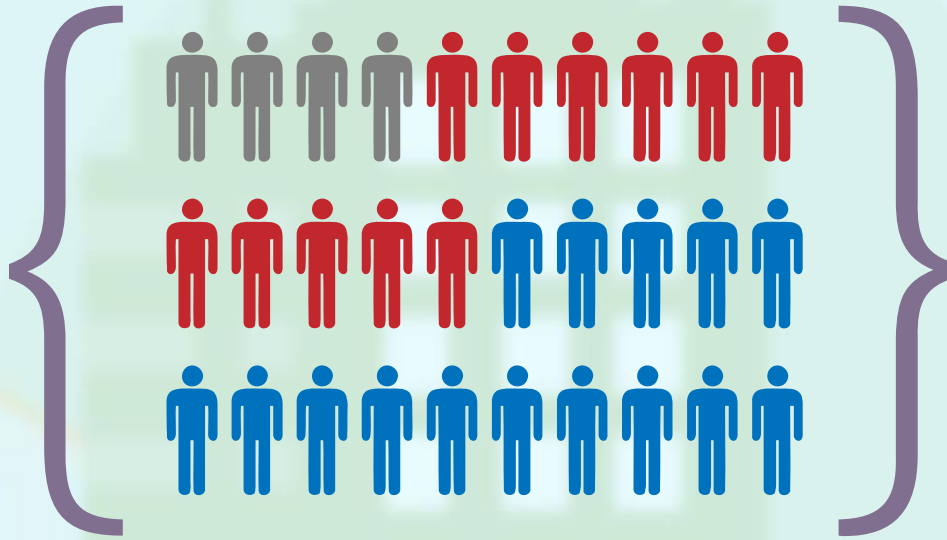
Current policies with major impacts on air pollution and health are mapped along with key stakeholders in urban health and urban development sectors, in addition to civil society.



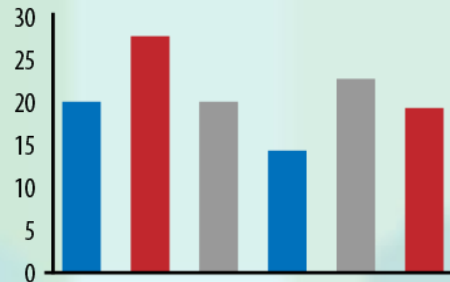


2

Health policymakers build competencies



Health policymakers build competencies in assessing health and economic impact of policies and in advising other sectors on urban environmental health risks. Health care workers equipped to advise patients on protective measures.



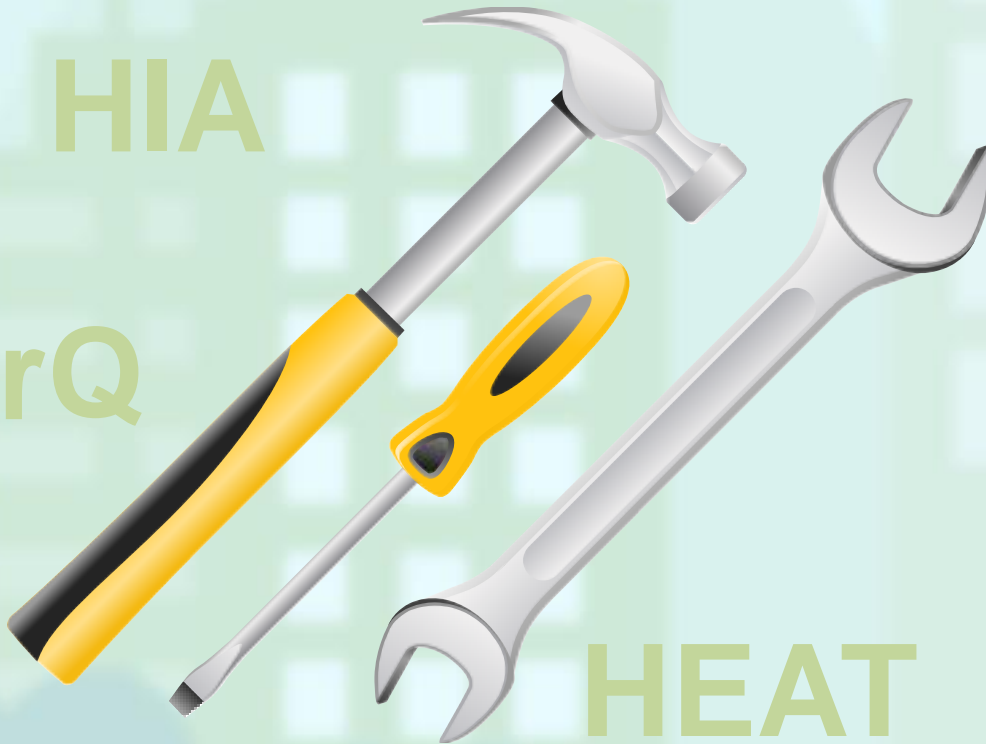


3 Tools for assessing health and economic benefits

HIA

AirQ

+



HEAT

Health economic assessment for walking/cycling

Tools for assessing health and economic arguments such as WHO's AirQ+, HEAT and One Health adapted and used locally. Tools for front line health care workers to advise patients & communities.



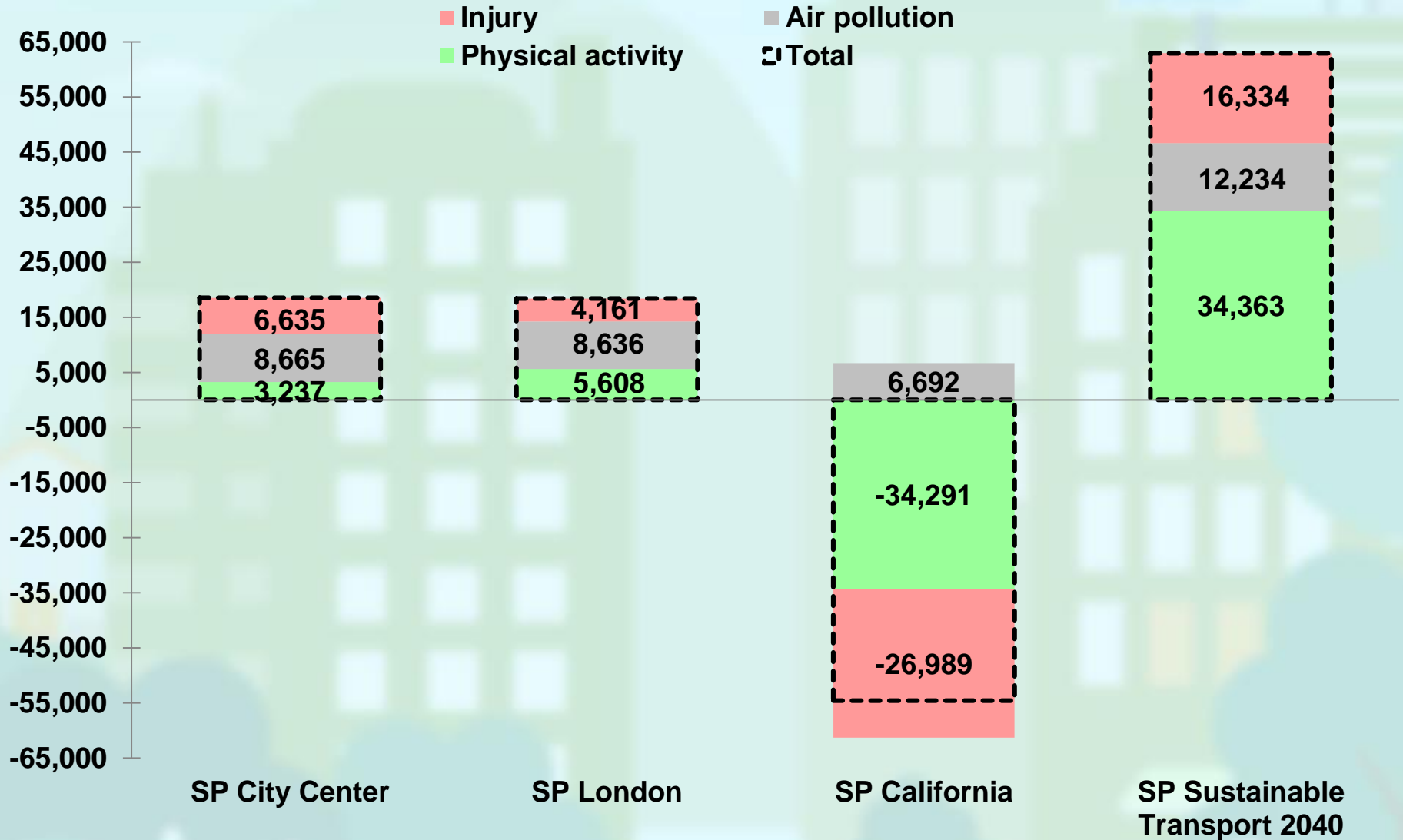
4 Alternative scenarios assessed and tested

Alternative scenarios based on policy options are tested or considered locally to estimate potential health and economic impacts.



Transport scenarios for Sao Paulo, Brazil:

Changes in DALYs for each scenario attributable to changes from air quality, physical activity and road injuries



Integrating health into urban policies: synergy and co-benefits

- Clean Energy
- Housing
- Transport
- Waste Management
- Land-use planning

Injuries, physical activity,
noise, diet

Air pollution

Climate change

Local and global
health impacts



5 Communications intensify demands for change



Urban leaders and champions engaged to communicate costs of inaction, including through the global BreatheLife Campaign, intensifying demand for action. Health care workers advise patients & communities about risk prevention.

BREATHELIFE

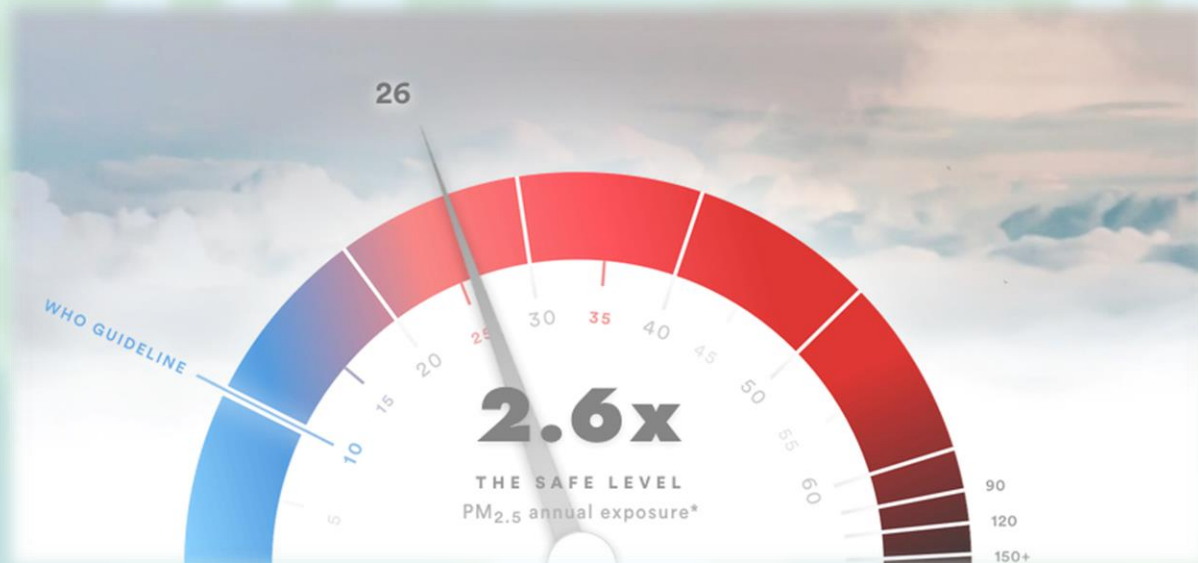
Clean Air. Healthy Future.

BreatheLife2030.org



6 Urban leaders act - changes in air quality, climate & health indicators monitored and tracked

Health and economic arguments provide urban leaders with incentives to act; changes in air pollution and related policies are monitored and tracked, using platforms such as the WHO Global Urban Ambient Air Pollution Database as well as ICLEI's carbonn registry



3 GOOD HEALTH
AND WELL-BEING



7 AFFORDABLE AND
CLEAN ENERGY



11 SUSTAINABLE CITIES
AND COMMUNITIES



13 CLIMATE
ACTION

