



Good Food, Good Life



Biodiversity in the Agri-Food System

- fundamental for survival of humankind -

UN EMG Nexus Dialogue on Biodiversity and Human Security

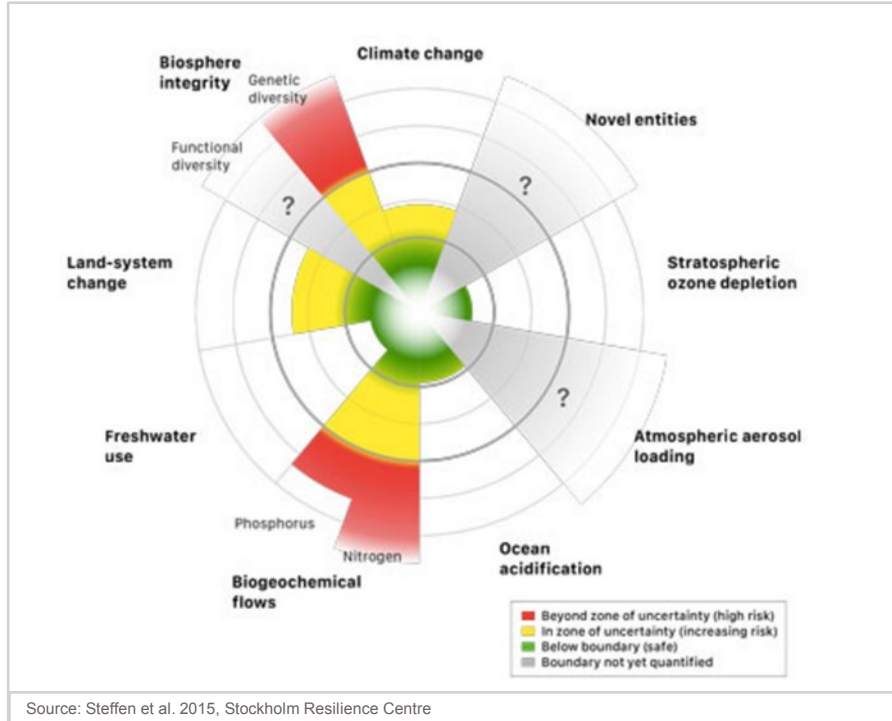
Dionys Forster

Raw Material Sourcing Specialist, Corporate Agriculture

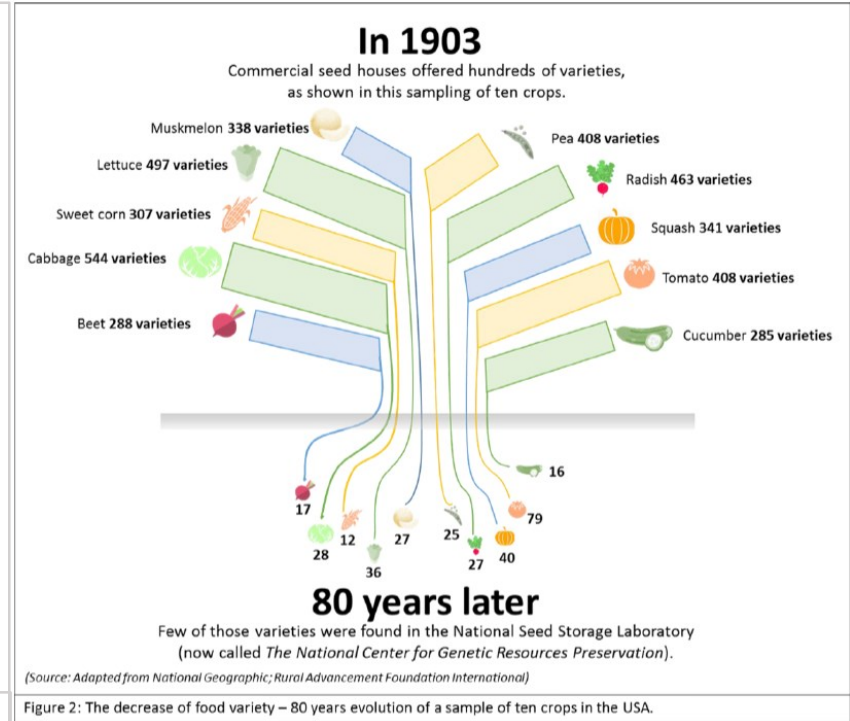
Geneva, 2 May 2018

Erroding biodiversity

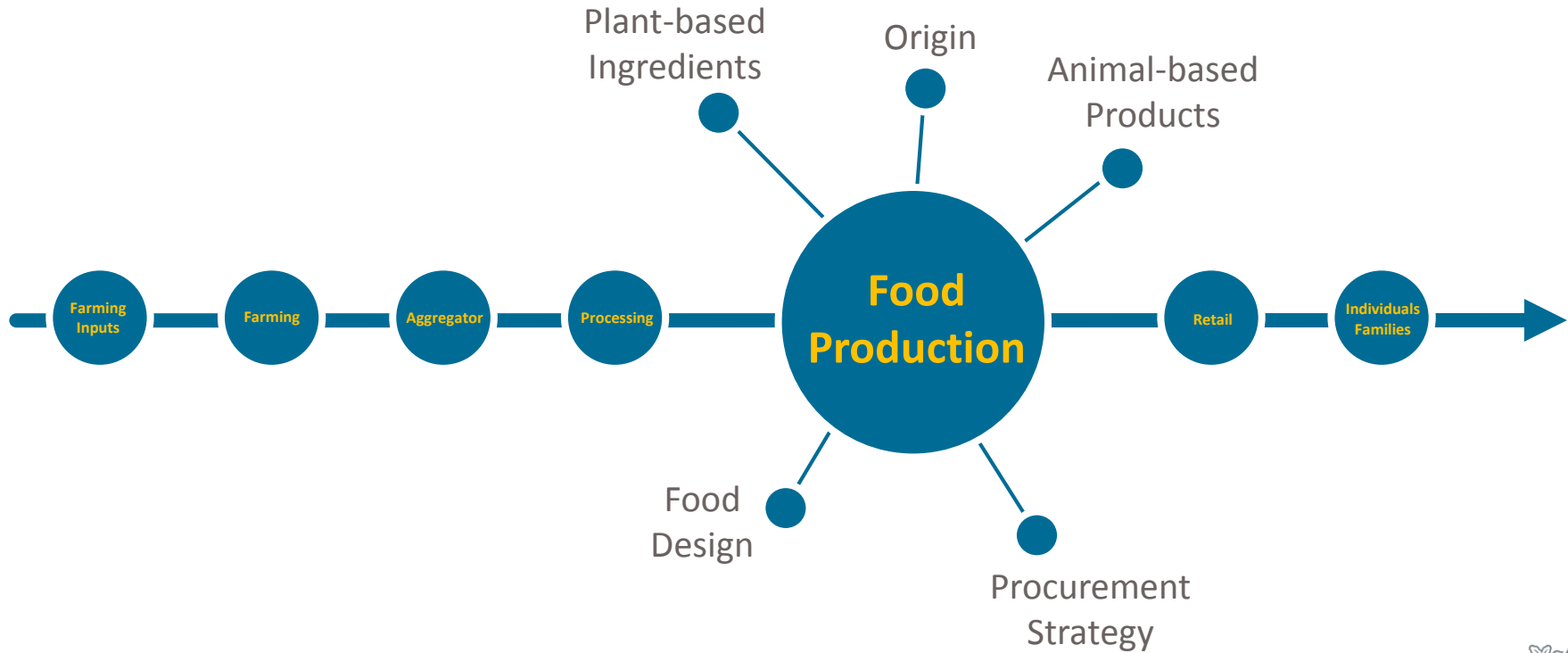
9 control variables for planetary boundaries



Decrease of food variety – 80 years evolution



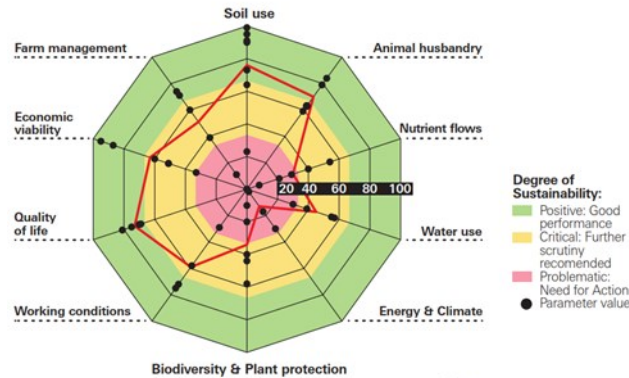
Biodiversity *Opportunities along the value chain*



Biodiversity *Integrated in RISE for farm sustainability assessments*

RISE (Response-Inducing Sustainability Evaluation):

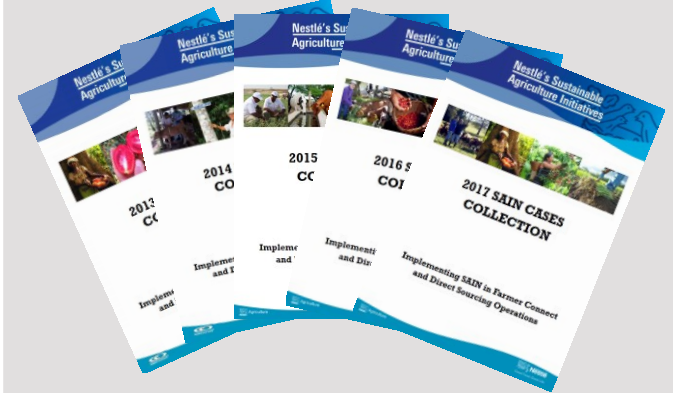
- Indicator-based method
- Attempting to make sustainability measurable
- Each indicator is made of several parameters
- RISE is not a control or certification system, but a development tool



B Bern University of Applied Sciences
F School of Agricultural, Forest and Food Sciences HAFL
H



Sustainable Agricultural Initiative Nestlé (SAIN)



Almost 300 practices cases, many addressing **biodiversity** issues at farm, landscape or catchment level.

More than **850 farms assessed** with RISE over last 17 yrs.

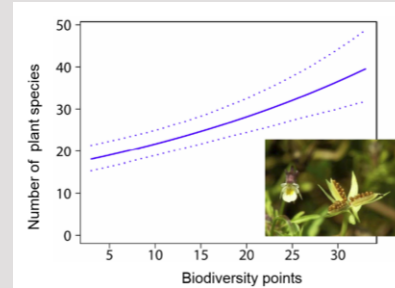
Biodiversity *Developed and promoted at farm level by IPSuisse*



Biodiversity points for Cailler Chocolate

- Ecological compensation: (quantity, quality, location) 6 criteria with 1-6 points
- Production areas: arable land / grassland 9 criteria with 1-2 points
- Special measures 3 criteria with 1-3 points

<https://www.ipsuisse.ch/>



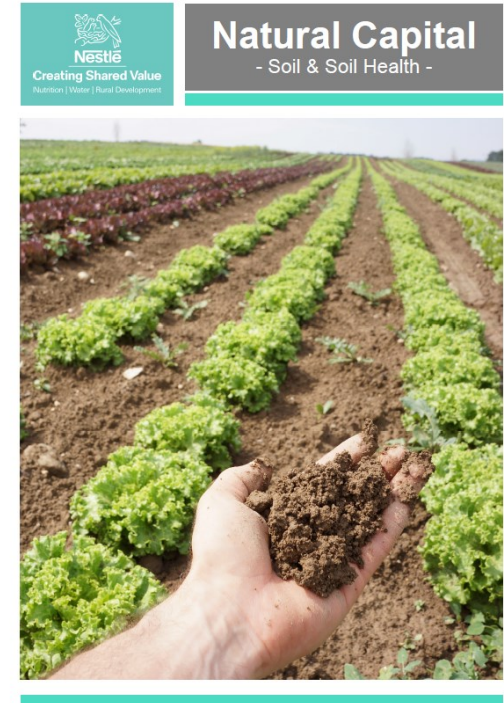
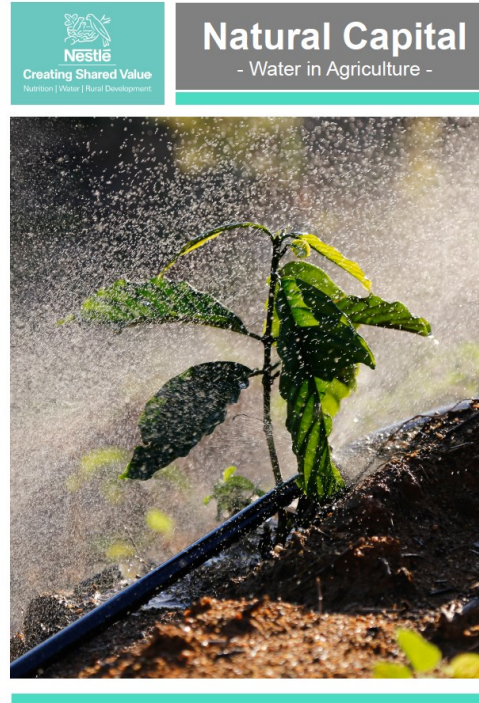
- A point-system, suitable for the valuation of biodiversity at farm
- A system that combines production and biodiversity
- Scientific evaluation of biodiversity by independent research organization

Bio-fortified Maize *Building on biodiversity in Nigeria*

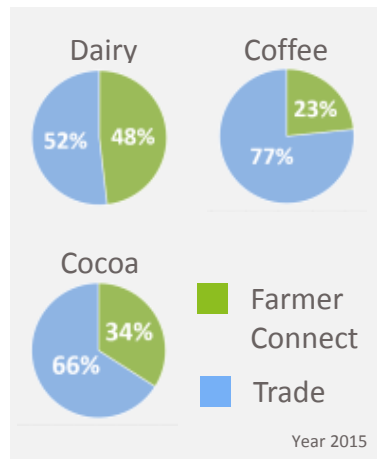
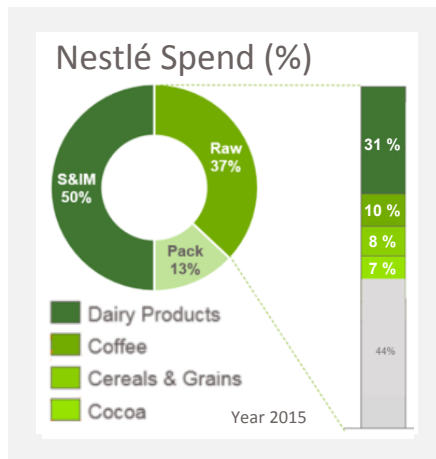
- Pro-vitamin A in maize may **vary between 0–19 ppm**
- Selection and breeding of maize varieties naturally rich in **Provitamin A**
- Collaboration with **HarvestPlus and IITA** on development and upscaling selected varieties
- **2016, 1000 MT of bio-fortified maize** sourced for Golden Morn, Nigeria
- **2017, >2000 MT of bio-fortified maize** to be sourced for Golden Morn, Nigeria
- Other crops under evaluation



Natural Capital Series *Themes that matter for humankind*



Nestlé Farmer Connect & Direct Sourcing Programs



Key Figures Farmer Connect (FC)



Direct sourcing staff:

2015

1'200

2016

1'010

2017

970



Farmers supplying directly to Nestlé:

760'000

719'000

685'000

Farmers received training:

400'000

363'000

431'000

FC investment into training

- Risk management
- Insurance police for ensured supply of safe & quality assured agricultural raw materials
- Compliance

Source: CSV Reports 2015, 2016, 2017; SAIN: Sustainable Agriculture Initiative Nestlé



Nestlé

Thank You